

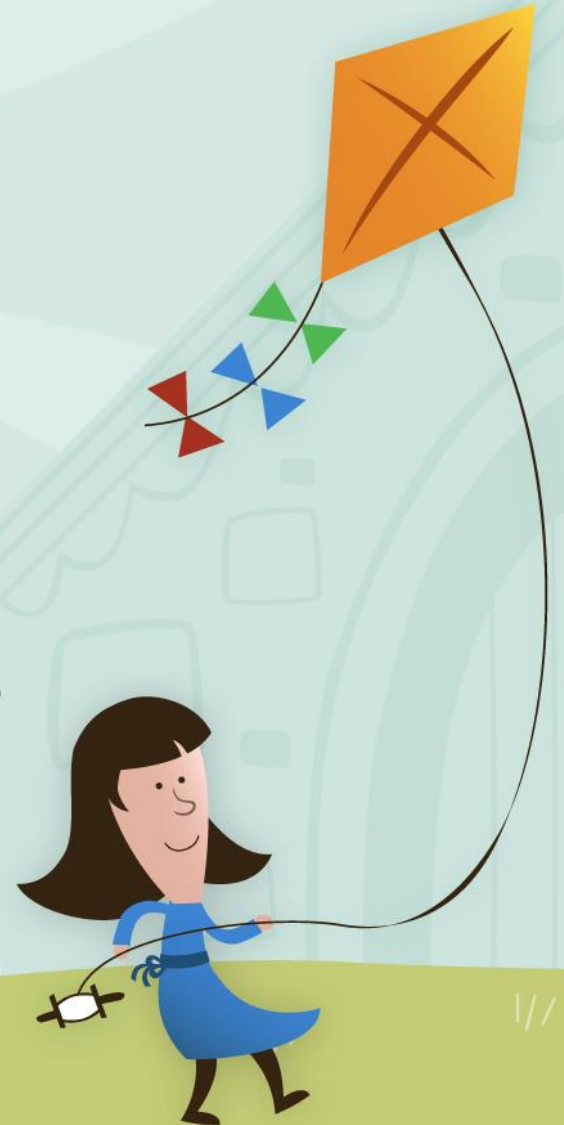
Welcome to Yates Mill Elementary

Kindergarten Orientation
Class of 2032

School Hours 9:15-3:45

Students enter building at 8:45

Website yatesmilles.wcpss.net



Agenda



- Staff Introductions & Kindergarten Overview
- Student Tour
- Academics
- Health/Medical Information
- YMES Overview



We're glad to meet you!



Kindergarten Team:

Emily Shaw Stephanie Spence
Brittney Delfino Kate Doherty
Lindsay Easley



Principal:

Vonda Martin Jenkins

Assistant Principal:

Gabriel Chidester



YMES FACTS



- Opened in August 2000
- Pre-K through 5th grade traditional calendar
- Current Enrollment – **approximately 650**
- Art, Music, PE, Media/ Technology Specialists
- Benefits of being a Title I School
- Active PTA



Leaping into excellence!

Typical Kindergarten Class Schedule

8:45–9:15	Arrival & Morning Work
9:15-9:30	Pledge, Morning Meeting, Calendar
9:30-10:55	Daily Five
10:55-11:05	Bathroom Break
11:05-11:50	Specials
11:55 -12:25	Lunch
12:30-1:30	Math
1:30-2:00	Team Time
2:00-2:30	Recess
2:30-2:45	Snack
2:45-3:15	Writer's Workshop
3:15-3:35	Science/Social Studies
3:35-3:45	Reminders, Compliments, Pack-Up



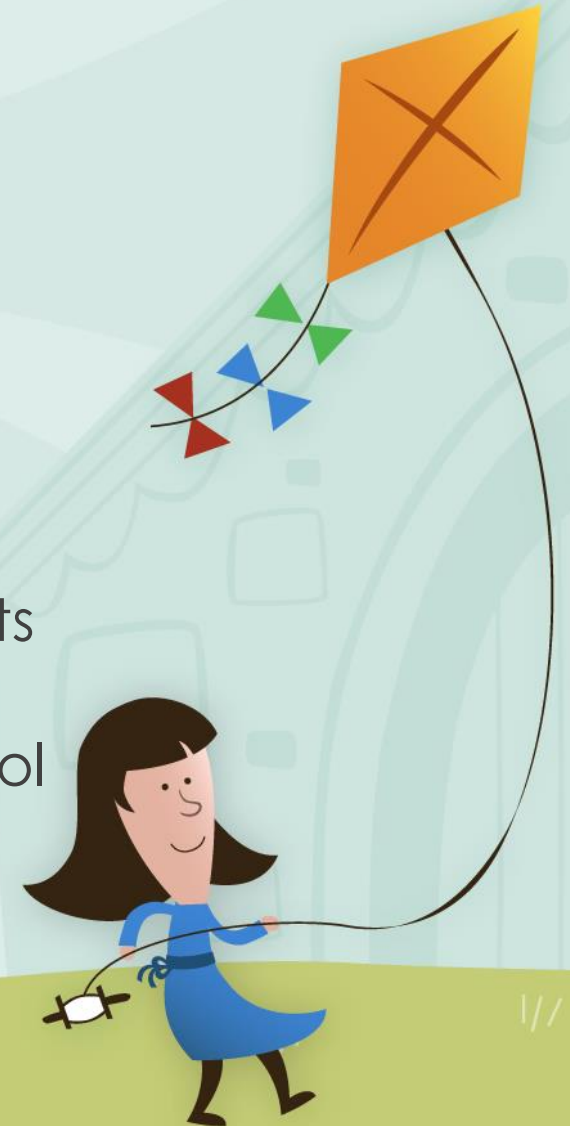


Specials:
Art
Music
P.E.
Media
Technology



Academics

- Math and Literacy Coaches
- ESL and Intervention Teachers
- Daily Instruction in all core areas
- Daily 5 Literacy Structure
- Writer's Workshop
- Math Stations
- Science Kits- hands-on activities and units promoting inquiry
- Interactive Technology throughout school





Team Time

- Serve each child through the use of flexible grouping in math and reading
- Team Time 5 days a week , 30 minutes a day
- Small groups based on specific needs
- Taught by Kindergarten teachers and Intervention teacher
- These daily opportunities allow students to take part in uninterrupted core instruction and grow as learners in specific, identified areas



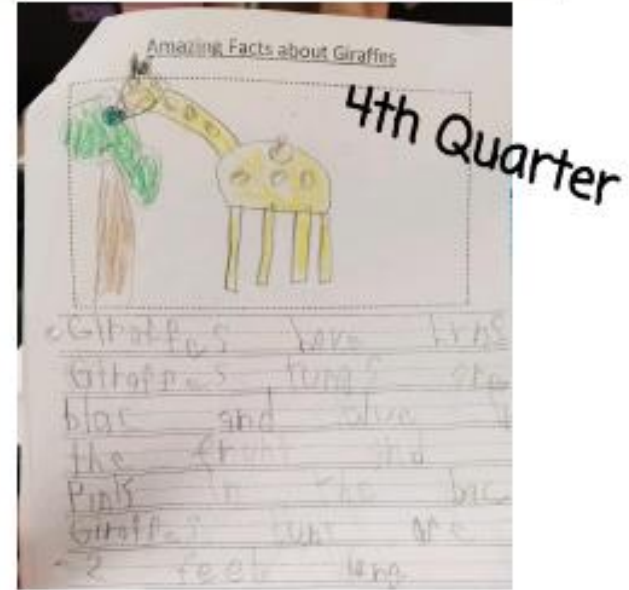
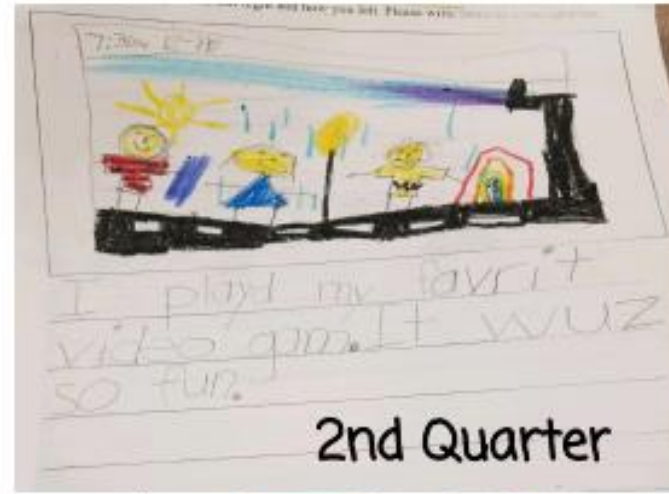
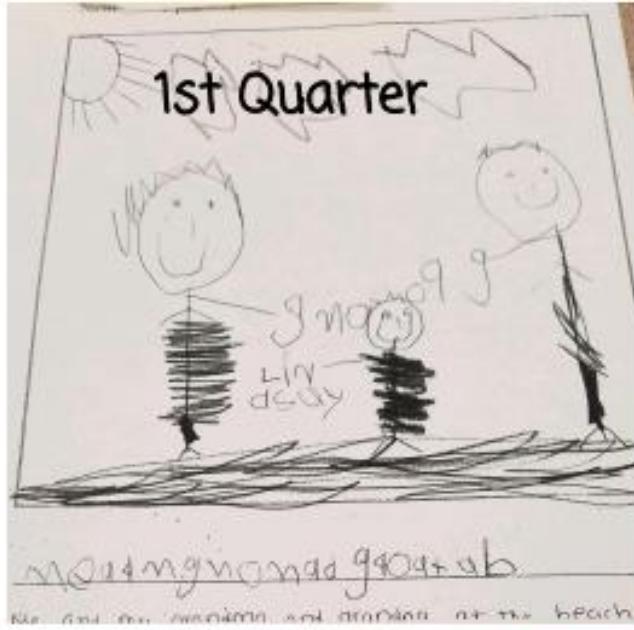
Reading

<p>End of 1st Quarter Sight Words: 12 Know all letters and sounds</p>	<p>End of 2nd Quarter Sight Words: 25 Word families: at, en, ot, ug, etc.</p>	<p>End of 3rd Quarter Sight Words: 50 Long Vowel Words: cake, cone, tube</p>	<p>End of 4th Quarter Sight Words: 75 Vowel Teams, ea, oi, etc</p>
<p>Level A</p>  <p>This is a big dog.</p>	<p>Level B</p> <p>I like to play on the horse.</p> 	<p>Level C</p> <p>She was sleeping on the rug. I said, "Wake up, Socks!"</p>	<p>Level D</p> <p>"Bedtime," said Mom. "Can I look at my book in bed?" asked Sam. "Yes," said Mom.</p>



Writing

Conventions:
capital letters,
periods, finger
spaces



Math



1st Quarter

- Counts to 20
- Write numbers 1-10
- Greater than, less than, equal to

2nd Quarter

- Count to 40
- Write numbers 1-20
- Count to answer "how many?"
- Recognize name 2D/3D shapes

3rd Quarter

- Count to 70
- Fluently add and subtract w..... -
- Solve addition and subtraction word problems (within 5)



4th Quarter

- Count to 100
- Fluently add and subtract within 10
- Solve addition and subtraction word problems (within 10)
- Measurement
- Composing Teen Numbers (11, 12, 13)



Before School Starts...

- Health Assessment—with up to date immunizations

Please notify or contact us about...

- Medication
- Allergies, chronic health conditions or other special needs, including IEPs
- Any questions- ask to speak with Nurse Christy DeBerry

Hint: if your child needs to take medication at school we require a doctor's note and the medicine in a prescription bottle



Health Concerns and Kindergarten



- School Nurses in Wake County are employed by Wake County Human Services, Wake County Public Schools and serve 2-3 schools each.
- Nurses provide services 2-3 days per week in each school.
- One goal of School Health Services is to keep all students healthy and safe in order to improve attendance and educational outcomes.



Health Information continued...

Immunizations

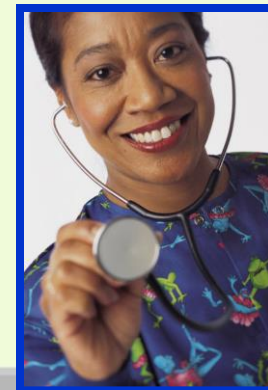


- Must be current.
- The parent, guardian or responsible person has 30 calendar days from the first day of attendance to present the required written proof of immunizations. The child CAN be excluded from school until proof is provided.
- If you have any questions about your child's immunizations please contact the school prior to the start date.



Kindergarten Health Assessments

- The parent, guardian or responsible person has 30 calendar days from the first day of attendance to submit the required health assessment form to the school.
- The child CAN be excluded from school until proof of the assessment is provided.





Medications

- Medications will be administered at school ONLY if a Physician Order for Medication form, 1702 is completed, signed by physician and parent and is in the possession of school officials.
- These forms are available at the front office.
- The Medication form and the pharmacy label information must match!
- ALL medications must be brought to school by parent/guardian.
- ALL medications must be in the original pharmacy container with original label on it.
- Parents may bring other medications to be administered at school such as cough drops, Motrin or poison ivy creams, etc. ONLY if a Physician Order for Medication form, 1702 is completed, signed by physician and parent and the medicine is in it's original container.



When Should I Keep My Child Home from School?

- Fever of 100 or higher(Should be fever free for 24 hours before returning to school).
- Nausea, vomiting or diarrhea
- Severe headache
- Red, watery eyes with yellow drainage
- Undiagnosed rash



Keeping Your Child Healthy

- Children learn best when they eat a healthy breakfast and receive adequate sleep. Five year olds require 10-11 hours of sleep every night.
- It is important for your child to attend school daily and to be on time.
- Studies show that frequent hand washing prevents colds and flu.
- Instruct your children in good hand washing techniques.



Children with Chronic Illness

- If your child has a chronic illness such as diabetes, severe asthma, severe allergies or seizures, please contact your school nurse.
- A health care plan can be developed indicating steps to be taken if your child requires medical care at school.



Make Sure That Your Child's School Can Contact YOU

- Keep your contact information at the school current. The school needs to know of any changes in your home, cell or work numbers immediately.
- Please make sure that the school has an emergency contact number in case you cannot be reached.





Behavior Program

Yates Mill has implemented a positive behavior program to encourage students to be in control of themselves. This simply means that we have high expectations for student behavior and we reward students who do their best. At Yates Mill, we expect all students to follow the “F.R.O.G.S.” beliefs.

FISH!
Respect
Order and Safety
Good Judgment
Self Discipline





"FROGS" Expectations

Yates Mill Elementary School



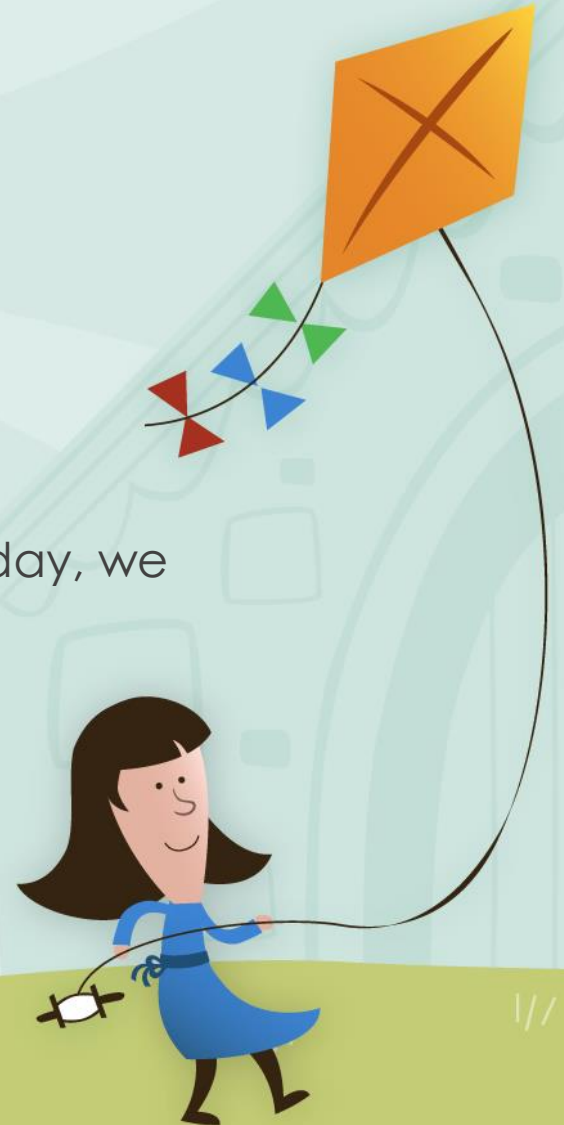
	RESTROOM	HALL	CAFÉ	PLAYGROUND	ASSEMBLY
F FISH Philosophy	<ul style="list-style-type: none"> Choose your attitude. 	<ul style="list-style-type: none"> Be there 	<ul style="list-style-type: none"> Be there for adults and peers Make their day 	<ul style="list-style-type: none"> Play Make their day <p><i>"Everyone can play"</i></p>	<ul style="list-style-type: none"> Be there
R Respect	<ul style="list-style-type: none"> Clean up after yourself Quiet voices 	<ul style="list-style-type: none"> Voices off 	<ul style="list-style-type: none"> Exhibit good table manners Take appropriate amount of food 	<ul style="list-style-type: none"> Exit and Enter building quietly Manage equipment 	<ul style="list-style-type: none"> Eyes on the speaker
O Order & Safety	<ul style="list-style-type: none"> Walking feet Report spills Wash/dry hands 	<ul style="list-style-type: none"> Walk on 3rd block Eyes forward 	<ul style="list-style-type: none"> Raise your hand for adult assistance Wait quietly in line Remain seated 	<ul style="list-style-type: none"> Correctly use equipment Play by the rules 	<ul style="list-style-type: none"> Criss-cross Bottoms down
G Good Judgment	<ul style="list-style-type: none"> Knock first Timely manner 	<ul style="list-style-type: none"> Hands and feet to self 	<ul style="list-style-type: none"> Use café supplies appropriately 	<ul style="list-style-type: none"> Sportsmanship 	<ul style="list-style-type: none"> Appropriate audience response
S Self- discipline	<ul style="list-style-type: none"> 2 soap pumps 2 towel pushes 	<ul style="list-style-type: none"> Focus on destination only Hall pass 	<ul style="list-style-type: none"> Talk to peers at your own table Clean up behind yourself 	<ul style="list-style-type: none"> Resolve conflicts with Rock, Paper, Scissors 	<ul style="list-style-type: none"> Hands and feet to self

...leaping into excellence!

Travel

- Carpool (**practice buckling/unbuckling seat belts**)
- Buses
- Child care vans
- Before and after school care at YMES

Tip: if your child ever needs to change their transportation, even for a day, we require a written note.



Time to eat!

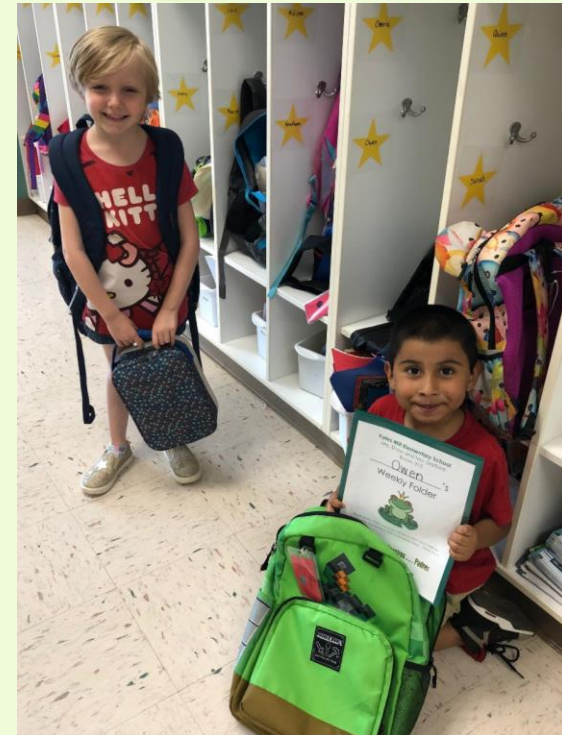
- What is a lunch number? Your child's id number.
- Options to buy:
 - Breakfast
 - Lunch
 - Milk Only
 - Free and Reduced Lunch—Forms available in office starting in July
- Packing a Lunch
- Daily class snack

Tip: You can monitor and update your child's account through the WCPSS website



What your child needs for school DAILY...

- Book bag
- Please, no rolling bags
- Healthy Snack
- Lunch or lunch money
- Change of clothes in a labeled bag
- Sneakers



Staggered Entry

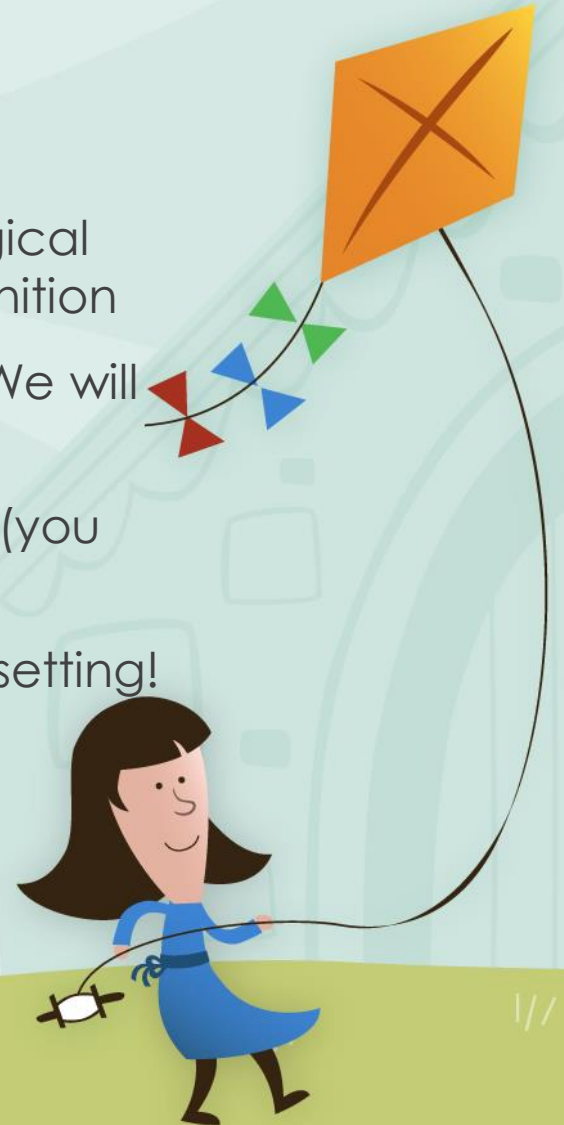
On your child's staggered entry day, we will be completing Wake County's Kindergarten Entry Assessments.

What are we looking at?

- Social interaction/development, letter/sound identification, phonological awareness/reading readiness, fine and gross motor skills, name recognition
- We use these assessments to begin planning your child's instruction. We will share the results with you at your first quarter conference.

Each kindergarten child will come for **one** full day during the first week of school (you will be notified by letter in early August of your child's staggered entry date):

We are excited to need your child in a small group setting!



Staggered Entry

- **8:45 – 9:15 Check-in**

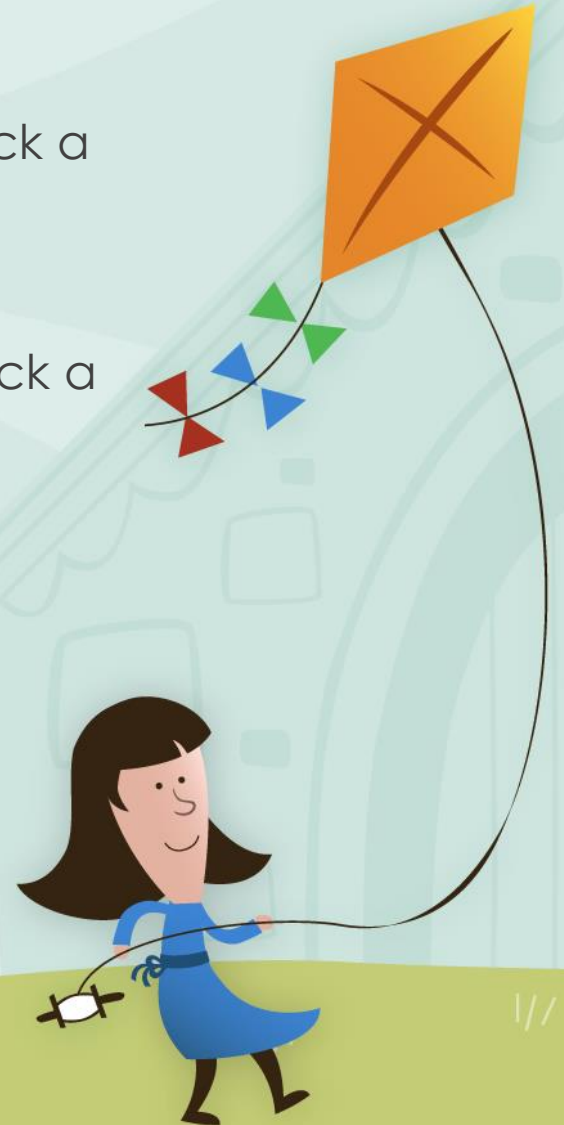
- Check in with staff
- Know how your child is going home that day
- Drop off school supplies

- **3:45 – 4:15 Dismissal**

- Students will go home according to what is said at check-in

- **During the day:**

- Students will eat lunch (pack a lunch or send money)
- Students will visit specials
- Students will eat snack (pack a healthy snack)
- Students will play at recess



Volunteer Opportunities

- Field Trips
- Room Parent
- Join the PTA
- Classroom Volunteer

All classrooms volunteers must be registered with WCPSS. You will have an opportunity to complete the online survey at Meet the Teacher.

If you are a current registered volunteer, you must re-register by October.



Summer Play Dates!

Join the PTA – Summer play dates:

Friday, June 28 at 6pm- Crowder Park

Wednesday, July 24 at 9:30am- Jack Smith Park

Saturday, August 17 at 4pm- Kids Together
Playground

We would also like to encourage people to join the Yates Mill Elementary School PTA closed Facebook group and/or follow us on Twitter (@YMESPTA) for updates/changes.

We will also post changes on our website

yatesmillpta.org





Yates Mill Traditions

- PTA Fun Run
- Book Character Parade
- Kindergarten Feast
- Letterland Parade
- Kindergarten Thankful Tea
- Spring Festival
- Kindergarten Beach Day
- Olympic Field Day



Whom to call...

- **Registration Questions:** Karen Foye, Data Manager
- **Kindergarten Program Questions:** Vonda Jenkins, Principal
- **Transportation Questions:** Karen Foye or Gabriel Chidester, AP



Questions?

Please call our main office (233-4244) and the secretary will direct you to the appropriate person.

Office Hours: 8:00-4:30



Thank you for coming
and welcome to **Yates Mill!**



**Please join us in the
cafeteria to pick up
your child!**